

# Newsletter 2

## June 2022



### The testing phase for IO2 & IO3 has already begun!

After the completion of the development of IO2 & IO3, partners have contacted craft learners, trainers, and experienced craftsmen, in order to evaluate the intellectual outputs and offer a different perspective on how they can be improved.



Start date: 01/09/2020

End date: 21/10/2022

Find more information about  
the project

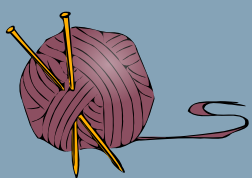
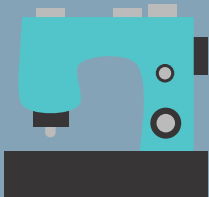


<https://startcraft.erasmus.site/>

**IO2 Startcraft Training Package** will be an online collection of tools regarding the main entrepreneurial and soft skills needed by craft entrepreneurs. The result will be a mixture of methodologies in training crafts entrepreneurs: a mix of theoretical lessons, practical activities, assessment tools, practical experiences/business models, etc. Through this platform, the trainees, crafts entrepreneurs will have the chance to obtain and strengthen high-quality work-based skills and competencies, in order to comply with the determined Competency Profile.



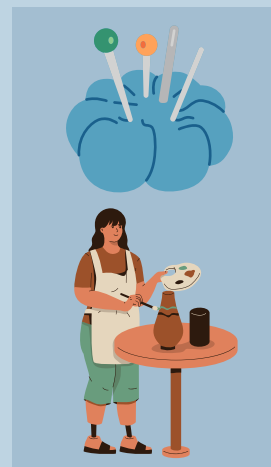
**IO3 Market training tool** constitutes an interactive online tool that will be soon available on the StartCraft platform. This tool will give the opportunity to the craft learners to simulate their business idea in a reality-based market context and will help them understand their economic environment and evaluate the chances of success of a craft idea, learning some key concepts linked to the development of a business plan.



## Stay tuned for IO4

**Teaching notes for VET Trainers** will help crafts VET students, new and future crafts entrepreneurs to complete the online training with recommendations and pedagogical content to increase the benefits to the final user. The notes will be made of two main parts:

1. a mix of useful resources for trainers that are complementary to the course, including references to methodologies taught, bibliography, VET best practices, link to other projects and business support programmes, etc.
2. specific recommendations established on the basis of the course's different modules and foreseen competencies, as well as for the market training tool for better exploitation of the materials offered.



Follow us on social media:



- Facebook: <https://www.facebook.com/StartCraftEU>
- LinkedIn: <https://www.linkedin.com/showcase/69507062/admin/>

## Partnership



*The European Commission's support for the production of this publication does not constitute an endorsement of the contents, which reflect the views only of the authors, and the Commission cannot be held responsible for any use which may be made of the information contained therein.*

Co-funded by the  
Erasmus+ Programme  
of the European Union

